

**1. INTRODUCTION**

Thank you for your purchase of a AquaMotion Wall Mount Transmitter, Model AM-WS. This transmitter allows you to wirelessly operate the circulator automation with the AquaMotion receiver modules.

All wireless signal communications within the AquaMotion System are based on rolling code technology to ensure highest security is used.

You will find the following in this package:

- Wall Mount Transmitter
- Mounting Accessories & Double-sided Foam Tape
- Lithium Battery CR-2032
- User's Instructions



Wall Mount Transmitter



Lithium battery



Screws and anchors



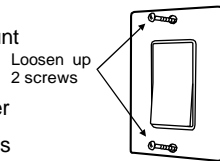
Double-sided Foam Tape

**2. PROGRAMMING TRANSMITTER TO RECEIVER MODULE**

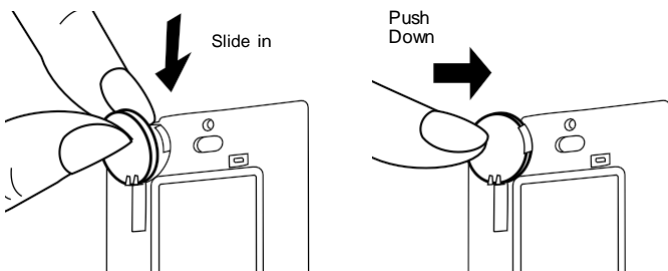
In order to operate a receiver module remotely, a transmitter must be programmed to the receiver module.

To program a transmitter into the receiver module, follow the instructions below.

1. Remove the front wall plate from the Wall Mount Transmitter by loosening the 2 screws.
2. Insert the battery to the Wall Mount Transmitter as shown. Positive side up. When the battery is installed, the red LED on the transmitter will be on for 1 second.



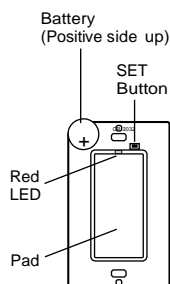
Loosen up 2 screws



Slide in

Push Down

3. You may transmit the programming signal from the transmitter by pressing the "SET" button on the transmitter. The red LED on the transmitter will be on for 15 seconds.
4. Put the receiver module that you plan to program into programming mode. Refer to the User's Instructions of that receiver module.
5. Activate the Wall Mount Transmitter by pressing the pad on the front. Its red LED will flash then off.
6. Once the transmitter is programmed, the receiver module will quit from programming mode.
7. Now the programmed transmitter is ready to be used.



Battery (Positive side up)

SET Button

Red LED

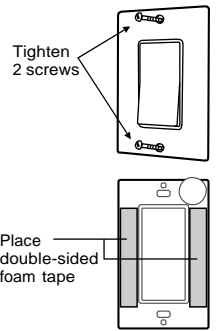
Pad

**3. INSTALLATION**

After programming, you are now ready to install the Wall Mount Transmitter.

You may use double sided foam tape to stick the transmitter on the wall, or you may use screws to mount the transmitter.

Using double sided foam tape:  
Place the 2 double sided foam tapes on the back of the back plate. Clean the surface of the wall where you plan to install the back plate. Peel off the foam tape cover and stick it to the wall surface.

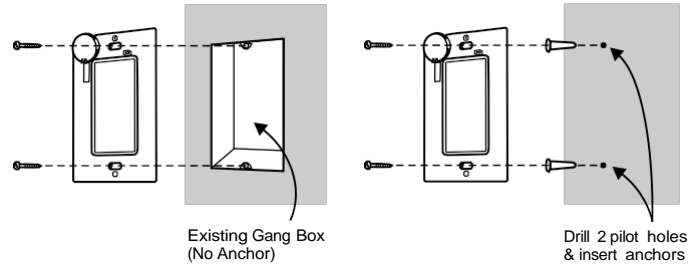


Tighten 2 screws

Place double-sided foam tape

Using screws:

If you are using screws, tighten the back plate of the wall mount transmitter by the 2 screws provided. If you are installing the back plate to an existing wall switch with wall box, no need to use the anchors. Otherwise, drill 2 small pilot holes based on the 2 mounting screw positions and insert the anchors before tightening the back plate with screws. After securing the back plate, either by double sided foam tape or screws, tighten the 2 screws on the front to secure the front plate.

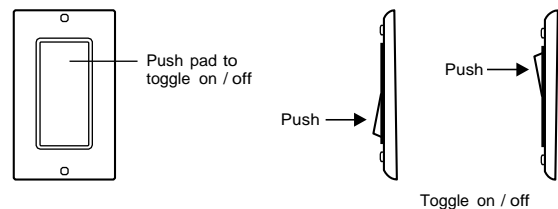


Existing Gang Box (No Anchor)

Drill 2 pilot holes & insert anchors

**4. ON / OFF OPERATION**

Pushing the pad from one position to the other will toggle the status of a load, i.e. when the light is off, pushing the pad will turn on the light, and vice versa.



Push pad to toggle on / off

Push

Push

Toggle on / off

## 5. ERASING WALL MOUNT TRANSMITTER FROM RECEIVERS

Erasing Wall Mount transmitter from the ON/OFF Control  
Model AMK-WS

You may erase a transmitter from the receiver module, but you cannot erase a specific device directly, you must erase all the wireless devices, then program the ones you want to keep.

## 6. BATTERY

When the operating range is reduced, or when the red LED does not flash during operation, it is time to replace the battery. Follow the same procedure as installing the battery in section 2 of this manual to replace the battery.

Note: Dispose of old batteries promptly and properly.

## 7. FCC

The Remote Control is approved by the FCC and it complies with Part 15 of the FCC Rules. Its operation is subject to the following two conditions :

1. This device may not cause harmful interference.
2. This device must accept any interference that may cause undesired operation.

### WARNING:

Changes or modifications to this unit not expressly approved by the party responsible of compliance could void the user's authority to operate the equipment.

## 8. WARRANTY

If, within one year from date of purchase, this product should become defective (except battery), due to faulty workmanship or materials, it will be repaired or replaced, without charge. Proof of purchase and a Return Authorization are required.

AquaMotion, Inc.  
88 C Jefferson Blvd.  
Warwick, RI 02888  
[www.AquaMotionHVAC.com](http://www.AquaMotionHVAC.com)  
[info@AquaMotionHVAC.com](mailto:info@AquaMotionHVAC.com)