

AquaMotionSMART™

Variable Speed ECM Circulators

EinsteinSMART™

Advanced Technology

These pumps represent the latest innovation in electronically commutated motors (ECM circulator technology). They use a permanent magnet motor design and variable speed technology to adapt automatically to system demand. Infinitely variable speeds means optimized system performance while drawing the least amount of energy possible.

High Efficiency

Lower power consumption than competitor's results in lower operating cost. The unique night set back feature automatically lowers its output at night to conserve more energy.

Application

The Einstein AM55-FVL is used in heating and the AM55-SFVL in plumbing applications.

Ease of Operation

Easy single button speed control with LED speed and Watt draw display. Automatic night set back feature saves money while you sleep. Line cord (10 ft.) with cord connector for boiler control included.

Universal 4 Bolt flange

Cuts inventory in half at the wholesaler, in the shop, and on the service truck and allows for versatile installation.

Innovative Cartridge Design

Replaceable cartridge extends the life of the pump for a fraction of the cost of a new pump. It promotes sustainability in a green environment.

Super Quiet Operation

US Built and Tested

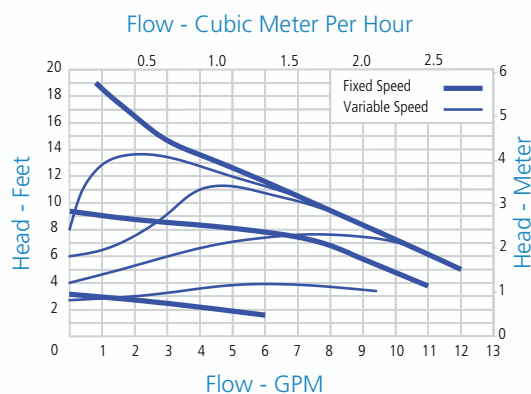


AM55

Power Consumption Data

MODEL	VOLTS	WATTS	AMPS	FLANGES
AM55-FVL	120	5-38	.07-.57	4 bolt
AM55-SFVL	120	5-38	.07-.57	4 bolt

Performance Data

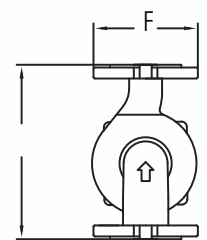
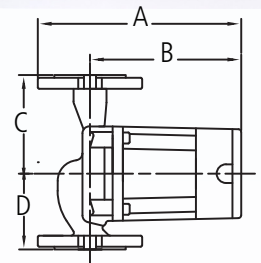


MODEL	HEAD RANGE	FLOW RANGE
AM55-FVL	0-21 ft	0-20 GPM
AM55-SFVL	0-21 ft	0-20 GPM

Min Fluid Temperature: 41°F 5°C

Max Fluid Temperature: 230°F 110°C

Max Pressure: 150 PSI



- A 7 1/4"
- B 5 1/2"
- C 3 1/2"
- D 2 3/4"
- F 3 7/8"
- G 6 1/4"

