

AquaMotion Flange Kits

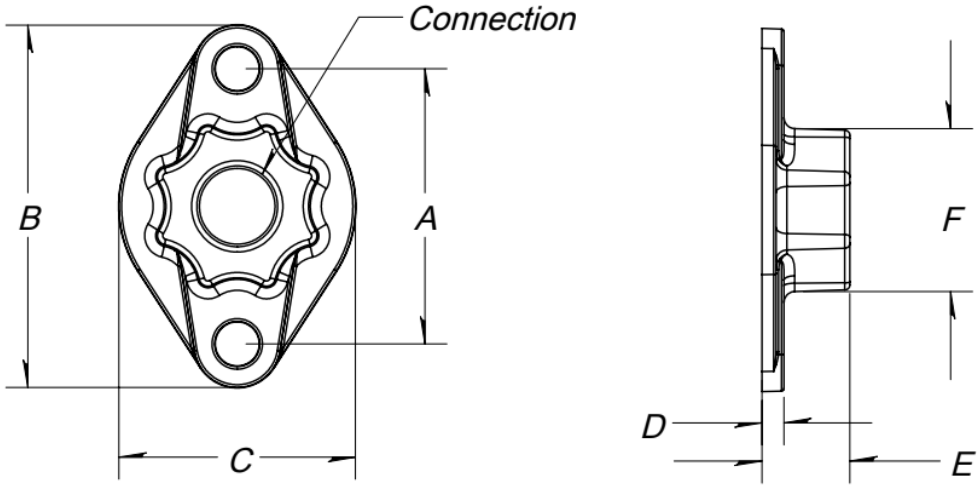
AquaMotion's Flanges are two bolt flanges that come in either Stainless-Steel, Cast Iron and Bronze. Flange sets are included with four bolts and four nuts, along with two gaskets to prevent leaking between fittings. Cast Iron and Stainless-Steel Flanges have Octagon Action-Grip for quick non-slip installation making it easy-on and easy-off with an adjustable wrench or 11/16" and 5/8" wrenches. The Cast Iron and Stainless-Steel flanges are available in 3/4", 1", 1-1/4" and 1-1/2" NPT.

Submittal Data Sheet SD110	EFFECTIVE 1/4/22
---	-----------------------------

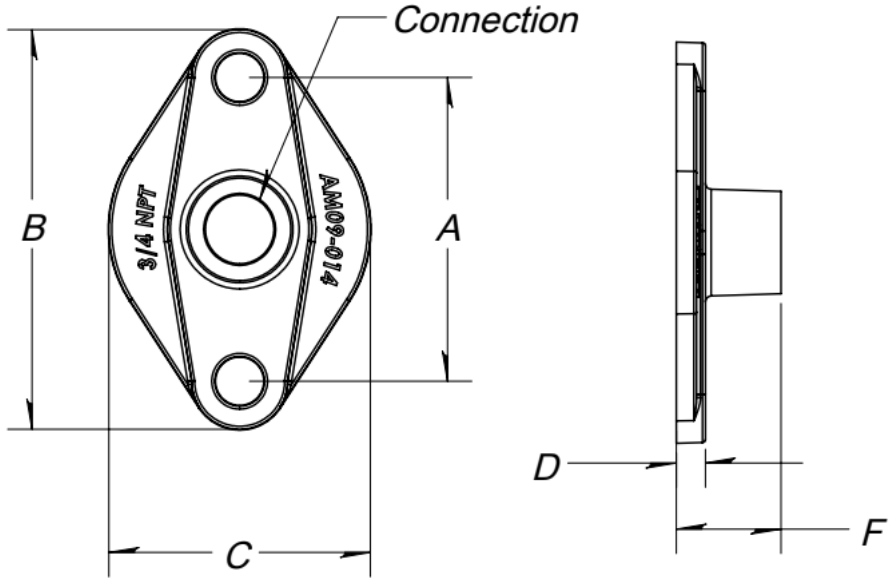
SUBMITTAL DATA APPROVAL	
For: _____	_____
Job: _____	_____
Date Submitted: _____	By: _____
Date Approved: _____	By: _____
Model Number: _____	Quantity: _____
Model Number: _____	Quantity: _____
Model Number: _____	Quantity: _____
Model Number: _____	Quantity: _____



Part #	Size	Material	Dimension (in)					
			A	B	C	D	E	F
FK75	3/4" NPT	Cast Iron	3-1/8"	4-1/8"	2.7"	0.25"	1"	-
FK100	1" NPT	Cast Iron	3-1/8"	4-1/8"	2.7"	0.25"	1"	-
FK125	1-1/4" NPT	Cast Iron	3-1/8"	4-1/8"	2.7"	0.25"	1"	-
FK150	1-1/2" NPT	Cast Iron	3-1/8"	4-1/8"	2.7"	0.25"	1"	-
FK75S	3/4" NPT	Stainless Steel	3-1/8"	4-1/8"	2.7"	0.25"	1"	-
FK100S	1" NPT	Stainless Steel	3-1/8"	4-1/8"	2.7"	0.25"	1"	-
FK125S	1-1/4" NPT	Stainless Steel	3-1/8"	4-1/8"	2.7"	0.25"	1"	-
FK150S	1-1/2" NPT	Stainless Steel	3-1/8"	4-1/8"	2.7"	0.25"	1"	-
FK75B	3/4" NPT	Bronze	3-1/8"	4-1/8"	2.7"	0.25"	1"	1.42"
FK100B	1" NPT	Bronze	3-1/8"	4-1/8"	2.7"	0.25"	1"	1.72"
FK125B	1-1/4" NPT	Bronze	3-1/8"	4-1/8"	2.7"	0.25"	1"	2.1"
FK150B	1-1/2" NPT	Bronze	3-1/8"	4-1/8"	2.7"	0.25"	1"	2.38"



Female Threaded Flanges



Male Threaded Flange